

# QuMax XR LTE

## Integrated outdoor multi band eXtra Range LTE directional antenna + place to install Teltonika RUT200/240/241/950/951/955/956/X09/X11

QuMAX eXtra Range LTE offers the most powerful directional LTE antenna of all QuWireless antennas. It is dedicated to connections with long distance to base station. It is designed to have Teltonika router installed inside IP67 enclosure. It is the first choice for fixed installations in industrial environment. There is also space for mounting internal genuine Teltonika GPS and Wi-Fi antennas inside the antenna enclosure.

Compatible Teltonika routers: RUT200, RUT240, RUT241, RUT900, RUT901, RUT950, RUT951, RUT955, RUT956, RUTX09, RUTX11.

NOTE: There is also available version with extreme high gain antenna for high bands (2300-2700 MHz) – QuMax XR LTE High Band

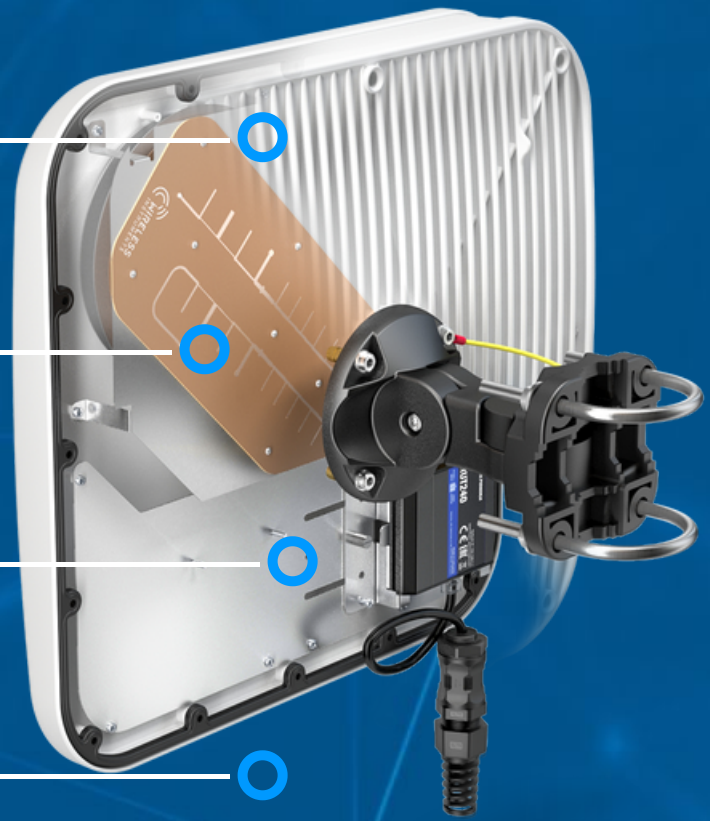


 **PASSIVE POE SUPPORT**

 **ANTENNA PERFECTLY MATCHED WITH THE ROUTER**

 **OUTDOOR ANTENNA WORKS IN ANY WEATHER CONDITIONS, IP67**

 **MADE IN EUROPE**



## UNIVERSAL MOUNTING BRACKET



## LTE ANTENNA SPECIFICATION

<b>FREQUENCY</b>	694 - 960 MHz 1.7 - 2.2 GHz 2.2 - 2.7 GHz
<b>SUPPORTED LTE/5G BANDS</b>	1, 2, 3, 4, 5, 7, 8, 9, 10, 12, 13, 14, 17, 18, 19, 20, 25, 26, 27, 28, 29, 30, 33, 34, 35, 36, 37, 38, 39, 40, 41, 44, 53, 65, 66, 67, 68, 69, 85, 103, n80, n81, n82, n83, n84, n85, n89, n90, n95, n97, n98, n100, n101, n256
<b>GAIN</b>	694 - 960 MHz : 7 dBi 1.7 - 2.2 GHz : 7 dBi 2.2 - 2.7 GHz : 7 dBi
<b>VSWR</b>	<1.70, max <2.00
<b>BEAMWIDTH</b>	70° /70° ±15°
<b>POLARIZATION</b>	Dual polarized X-Pol
<b>IMPEDANCE</b>	50 Ω
<b>FRONT-TO-BACK</b>	>10 dB

## MECHANICAL SPECIFICATION

<b>MATERIALS</b>	ABS, aluminum, PTFE, Fiberglass
<b>CONNECTOR TYPE</b>	RJ45
<b>INGRESS PROTECTION</b>	IP67
<b>DIMENSIONS</b>	392 x 392 x 99 mm 15.43 x 15.43 x 3.90 inch
<b>WEIGHT</b>	3.7 kg 8.16 lbs
<b>OPERATING TEMPERATURE</b>	From -40°C to 80°C From -40°F to 176°F
<b>MAST DIAMETER</b>	25-60mm 0.98-2.36 inch

## FREQUENCY BANDS

<b>LTE / 4G GSM</b>	5	8	12	13	14	17	18	617 MHz	960 MHz
	19	20	26	27	28	29	44		
	67	68	85	103	n81	n82	n83		
	n89	n100							
<b>LTE / 4G UMTS</b>	1	2	3	4	9	10	25	1710 MHz	2170 MHz
	33	34	35	36	37	39	n80		
	n84	n86	n95	n98	n101				

LTE / 4G WCS DARS

2300  
MHz

30

40

n97

2400  
MHz

LTE / 4G

2400  
MHz

7

38

41

53

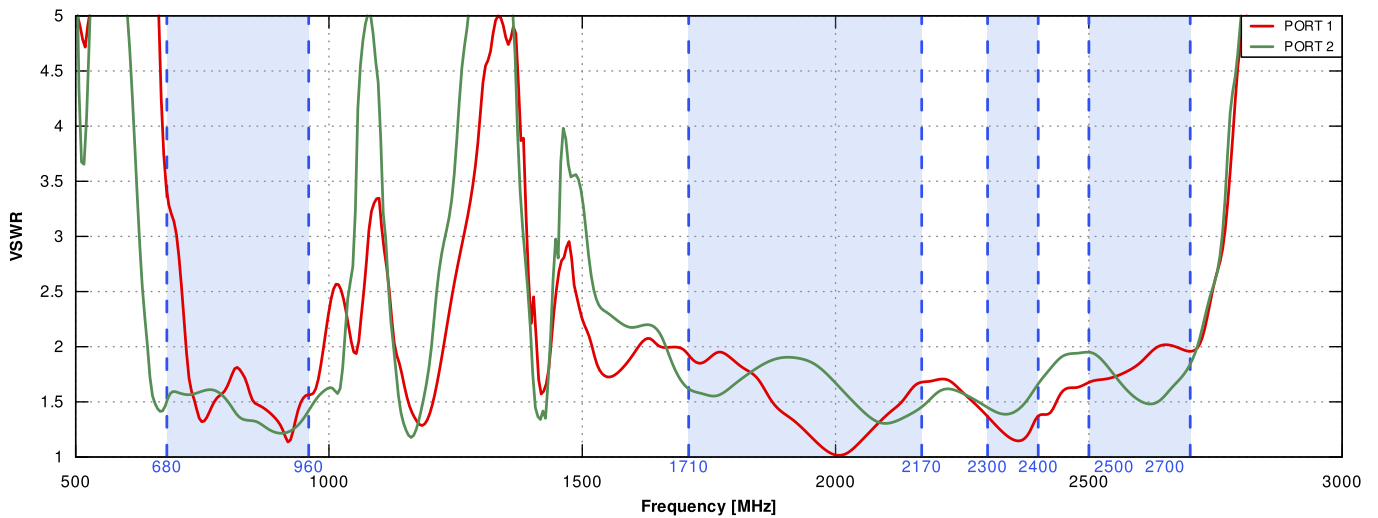
69

n90

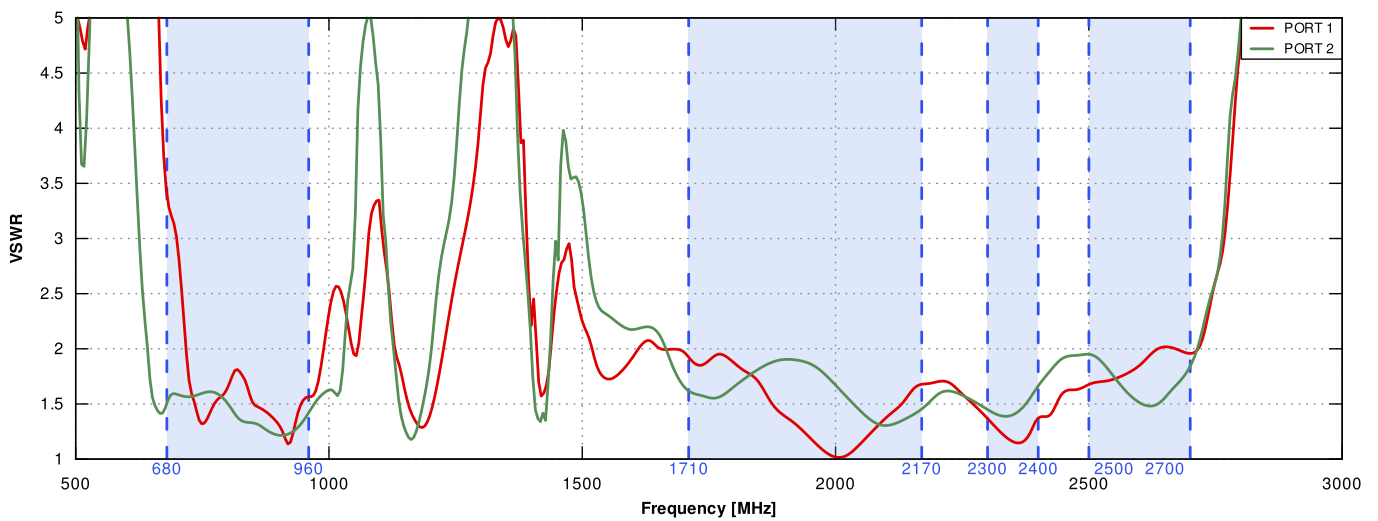
2700  
MHz

## PLOTS

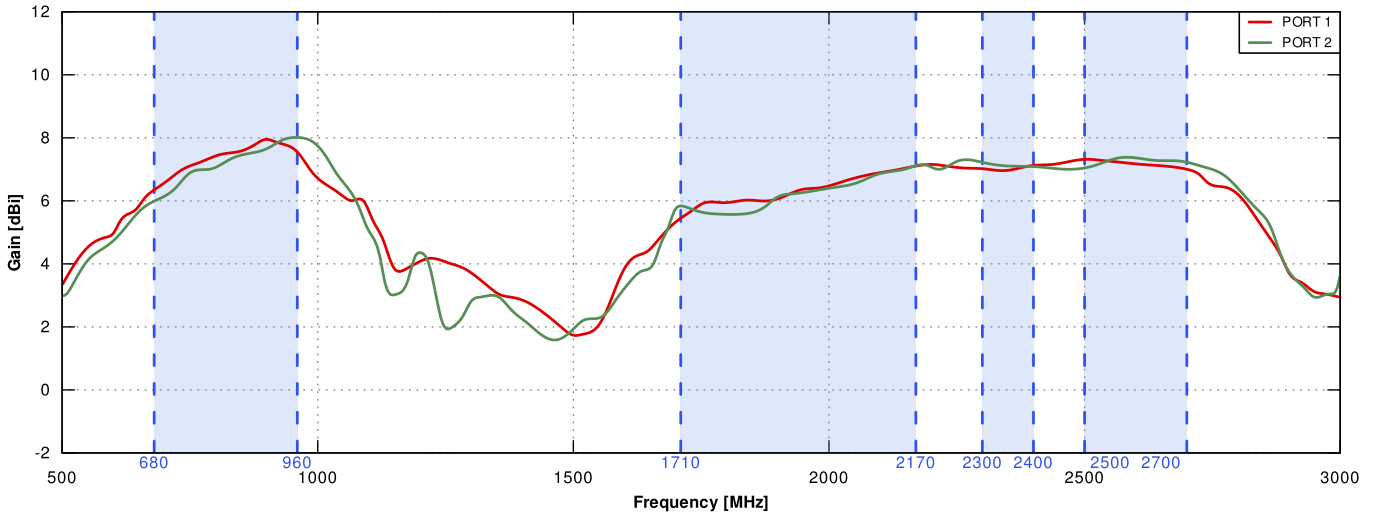
VSWR for LTE antenna PORT 1



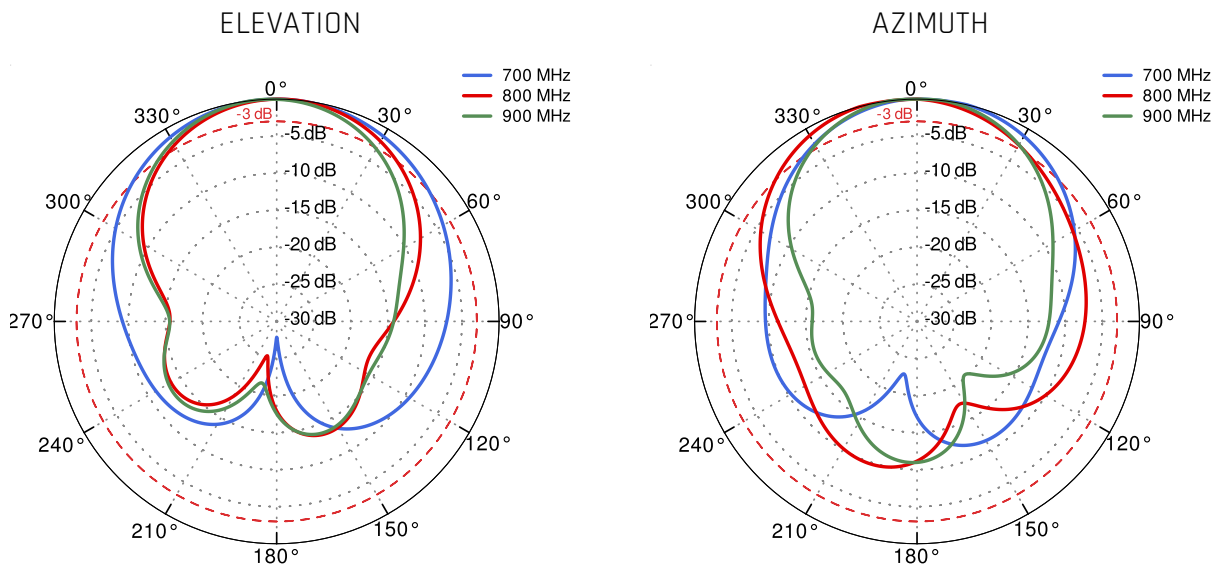
VSWSR for LTE antenna PORT 2



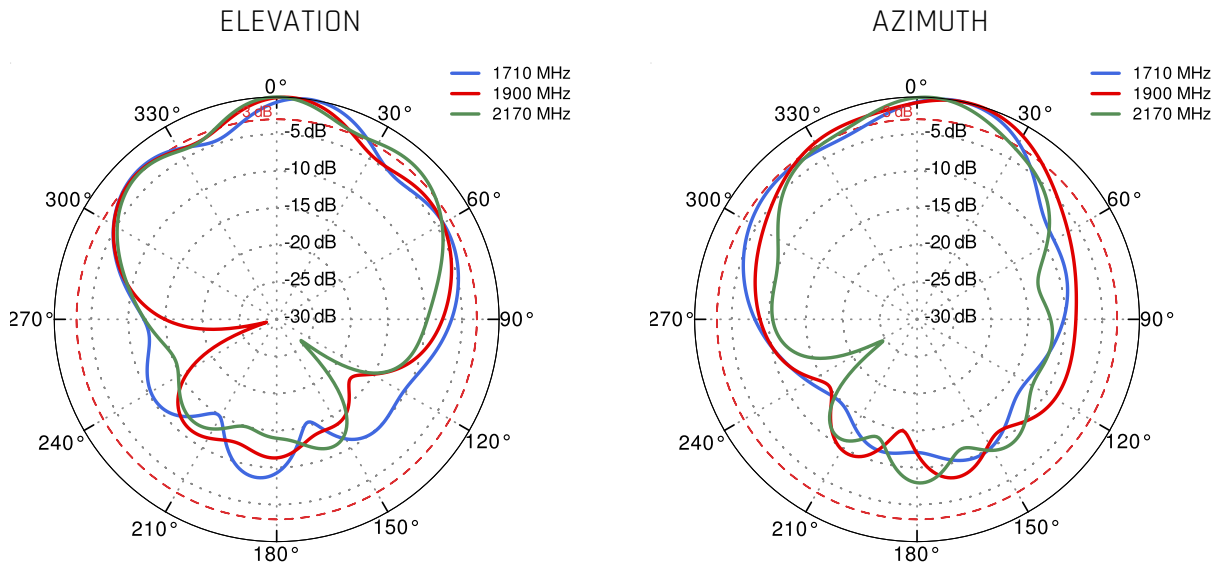
Gain for LTE antenna



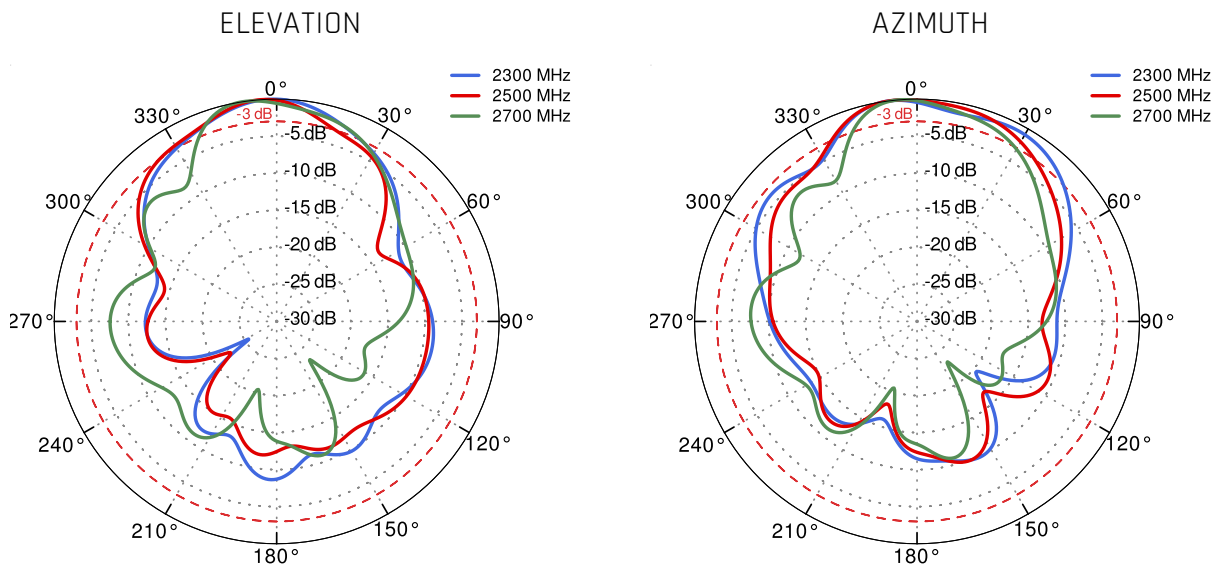
Port 1 700MHz to 900MHz



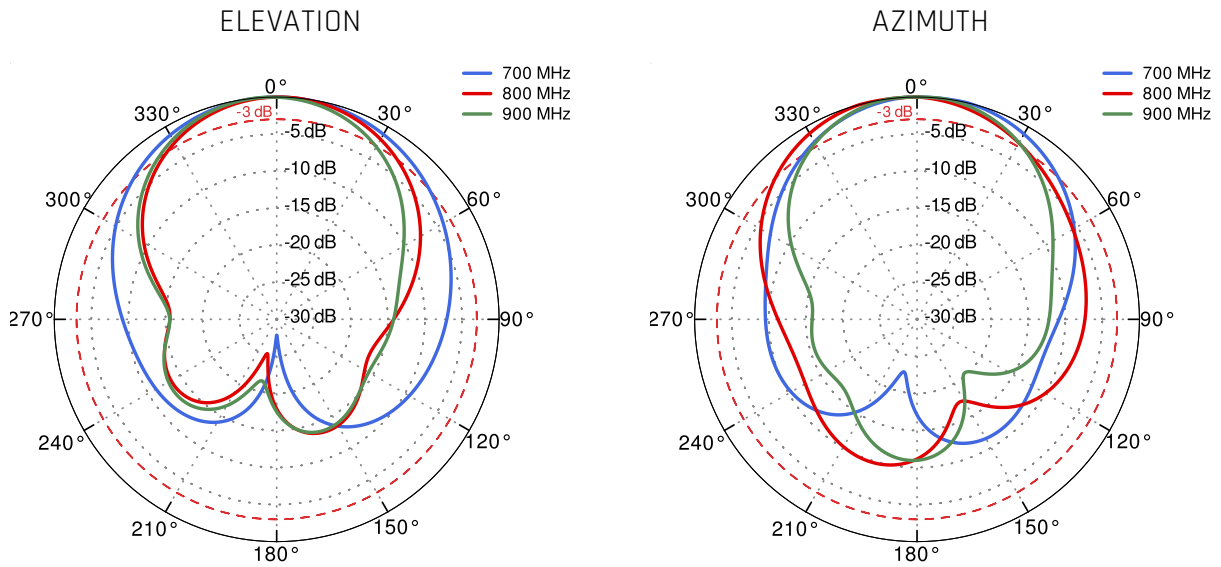
Port 1 1.71GHz to 2.17GHz



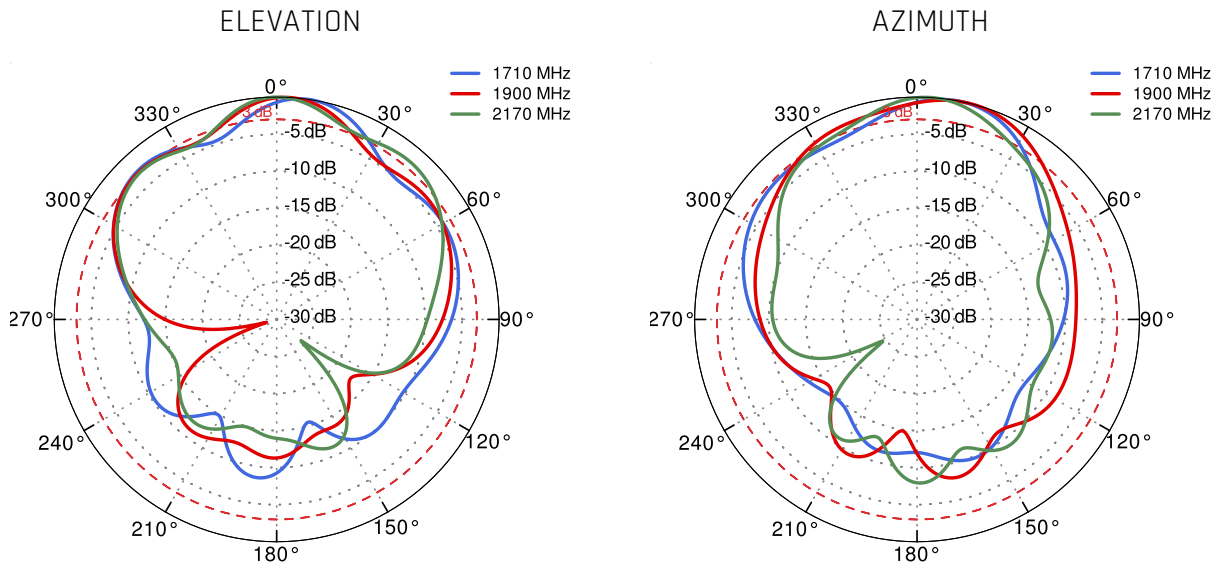
Port 1 2.3GHz to 2.7GHz



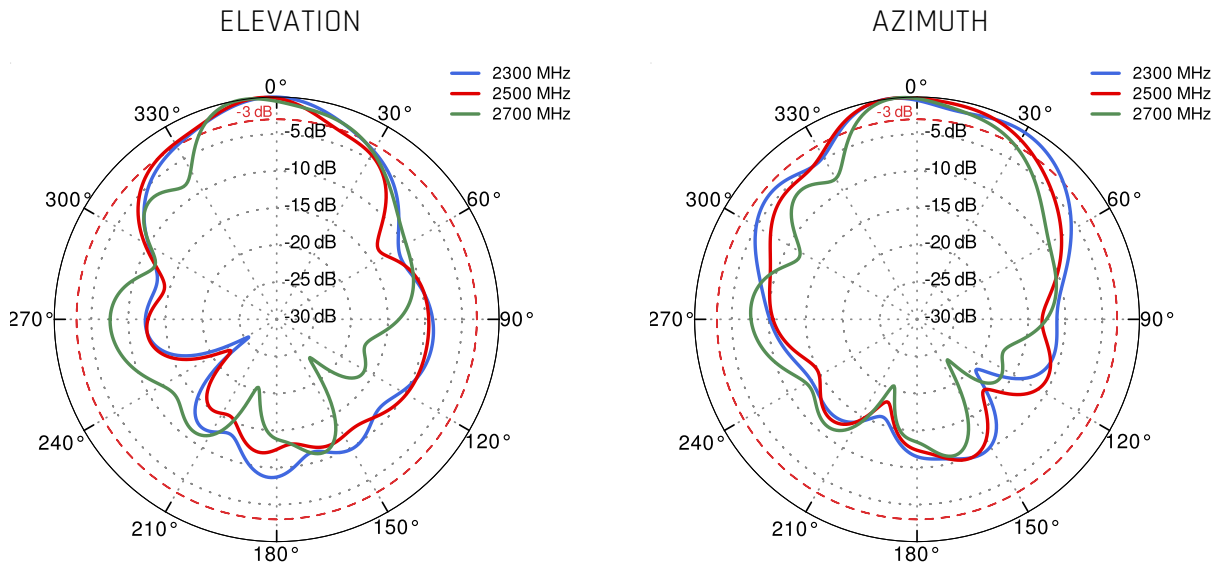
Port 2 700MHz to 900MHz



Port 2 1.71GHz to 2.17GHz



Port 2 2.3GHz to 2.7GHz



**DIMENSIONS**

